



# Mini-Bulk Recycling Summit

Mid America CropLife Association

November 10, 2009

[don.bradley@agdata.net](mailto:don.bradley@agdata.net)



- Mini-bulk
- IBC
- Intermediate Bulk Container
- Totes
- Portable tank



# Container Types

- Rotationally molded
- Composite IBC
- Stainless steel



# Time to Adopt Standardized Terms?

- Asset tanks
- Limited use tanks



# Asset Tanks

- Rotationally molded polyethylene
- Stainless steel
- Meet all requirements in EPA  
Container and Containment Rule
- Designed and constructed for years  
of service



# Limited Use Tanks

- Composite IBCs
- Can meet EPA Container and Containment Rule requirement for first fill
- Stewardship challenges for retailers to determine “end of service life”
- Opportunity to communicate options for reconditioning or disposal







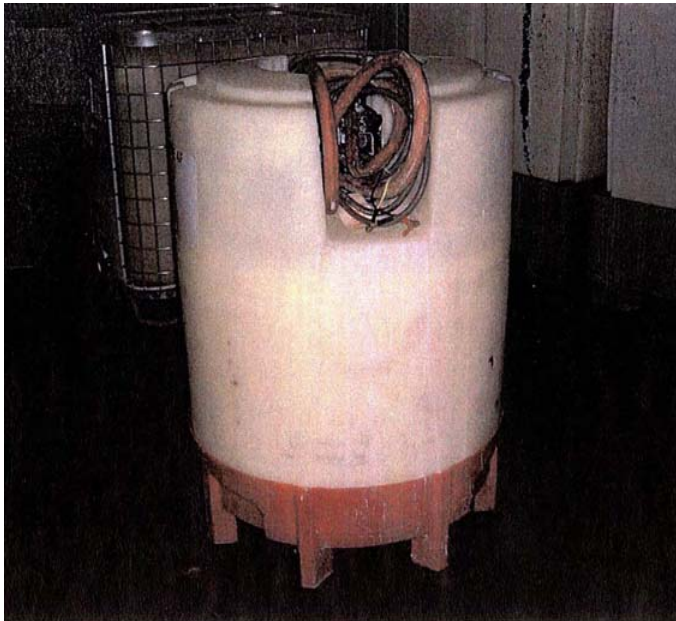




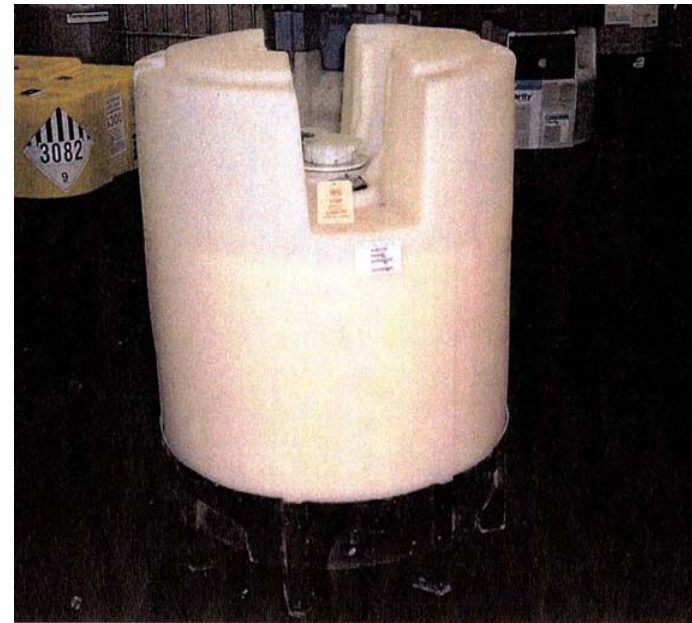


CAGE 250 GAL  
WOODEN PALLET

190 LB TARE WT



SNYDER 110 GAL GENERATION II  
FIL-RITE PUMP  
172 LB TARE WT



SNYDER 110 GAL GENERATION II  
DD6 PUMP  
105 LB TARE WT